



NEWSLETTER

NOW WEEKLY! With art by Vera !
from the Astrology Center of America / AstroAmerica.com

July 12, 2011

ARCHIVE — [Subscribe](#) / [Unsubscribe](#)

Email Dave@astroamerica.com

Vettius Valens: Progress

A FIRST DRAFT of Book I is now ready. Mark Riley's crisp and clear text is set, the charts have been added, I have included marginal notes explaining some of the more abstruse points. About 50 pages, see it [here](#), as a pdf file.

(The text for all the nine books has been set, more than 100 charts have been placed, and numerous notes have been added. I am now going back through the entire treatise, applying what I have learned.)

The biggest surprise is that "Vettius Valens of Antioch" (Antioch being a coastal city in southern Turkey near the Syrian border) was not of Antioch, as we had presumed. Nor did he live in Alexandria, which we had also presumed.

Vettius Valens was a Ukrainian Greek most likely born on the banks of the Dnieper near **Dnepropetrovsk**. As a young adult he was a sailor, presumably in the Black Sea. He eventually settled in the Crimea. All of which can be deduced from the charts he provides. Judging by the way he presents himself, he never lived in Alexandria. The reason we do not know of any of his sources is presumably because they were all Ukrainians, like himself. Many surprises.

ALMANACK

for the week (all times GMT)

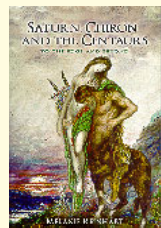
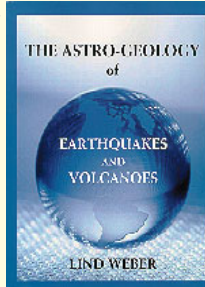
Notes

14	02:39	☾ ✕	Eclipse
12	03:29	♀ ✕ ♂	
	12:21	☾ Δ ♀	Void
13	07:36	♀ □ ♃	
	14:14	☾ ☿	
14	00:34	☾ ♂ ♀	
	06:19	☾ ♃ ☉	
	12:56	☾ ♂ ♀	
15	06:39	☉ 22 ☿ 28	Full Moon/Void
	20:30	☾ ☿	
16	12:03	♀ ♂	
17	12:24	☾ ♂ ♀	Void
18	05:13	☾ ✕	

Extracted & adapted from [AstroAmerica's Daily Ephemeris, 2000-2020](#). Get yours!

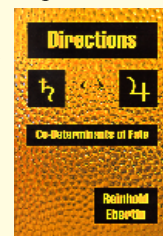
NEWLY REPRINTED

The Astro-Geology of Earthquakes and Volcanoes, by Lind Weber. From 1994, a masterful treatment of earthquakes and volcanoes, complete with 34 specific geographical signatures, from Alaska to Indonesia to Japan to California and lots more. Quakes can be predicted. \$34.95



Saturn, Chiron and the Centaurs, To the Edge and Beyond, by Melanie Reinhart. This is a reprint of the CPA Press edition of 1996 & consists of lecture transcripts as given in London. Part 1 on Saturn, Part 2 on the Centaurs Chiron, Pholus and Nessus, where the buck stops. \$34.99.

Directions, Co-Determinants of Fate, by Reinhold Ebertin. Directions on the 90° dial, with an emphasis on friendship, love, separation, divorce, birth, miscarriages, more. \$26.95. (Summer is looking awfully des-



perate, folks. Send \$\$\$.)

ASTRO MED

A to Z
FROM C.E.O. CARTER'S ENCYCLOPAEDIA

Haemorrhoids are one of the commonest Scorpician maladies. Almost any body afflicted in that sign will give a bias to them, but Jupiter therein, or afflicting a planet therein, seems the commonest cause. Aquarius and Virgo are often involved; sometimes the 8th house is in place of Scorpio. Mars or Uranus concerned imply the likelihood of an operation.

Hair. The fiery signs have fine hair and tend to lose it soon, especially round the temples; the airy signs have fine hair, but tend to go grey rather than bald [true!]; the earthy & watery signs usually have plenty of hair, and in particular Taurus, Cancer, and Pisces; but Cancer is often very grey. Afflictions to the asc., to Aries, and generally in the cardinal signs tend to affect the hair. I think 28° of the cardinals may be singled out in this regard, also 18° of Taurus, near the "Head of Medusa", whose beautiful hair was changed to snakes owing to the anger of Athene. I have also noticed persons with exceptionally fine and beautiful hair often have Moon or Venus in or near 5° Aries or Sagittarius.



STAR OF THE WEEK



POLLUX beta Geminorum 23♋ 22

Notes: An orange star situated on the head of the Southern Twin. It represents Pollux, son of Jupiter & Leda, and the immortal one of the twins, famous for his skill in boxing. Sometimes called Hercules, and symbolically named A Heartless Judge.

Influence: According to Ptolemy is of the nature of Mars. It gives a subtle, crafty, spirited brave, audacious, cruel and rash nature, a love of boxing, dignified malevolence, and is connected with poisons.

If rising: Bad eyes, blindness, injuries to the face, sickness, wounds, imprisonment, ephemeral honour and preferment

If culminating: Honour & preferment but danger of disgrace & ruin.

With Sun: Occult & philosophical interests, blows, stabs, serious accidents, shooting, shipwreck, murderer or murdered, extreme sickness. — from **Fixed Stars**, by Robson

Ivy M. Goldstein-Jacobson
1893-1990

IVY'S GEM OF THE WEEK

Your Astrological Biography

SOME of us have made our way up from precisely nothing, in the process of accomplishing our goal with credit to ourselves and our ancestors who after all include the only one from whom we can ever actually inherit: ourselves. Why do we think this? Because we are always, forever and from the first, the same Soul that is immortal, and the same encasing Spirit that personifies it each time like our Sun by Sign. In our forward evolution, incarnation after incarnation, we return each time better equipped for soul growth and spiritual expansion that sometimes could yet start under unpromising circumstances at first.

However, we always bring over with us at each return the two indispensable possessions we need most: our personal aptitude and talent that are essential equipment for our Immediate Future, both our future and our possessions being ruled by the Second House.

In the chart overpage, the Sun and Saturn, ruler of the Second House, are conjunct there in the Sign of business-interests, Capricorn. They confirm the same aptitude carried over from the previous incarnation-Twelfth House whose ruler Mars conjunct Spica, elevated and exalted in the highest house, disclose the same executive ability as the Sun in the financial Taurus decanate of the cardinal Sign Capricorn. The planet ruling the day of birth (Mars here) is a clue by the house position to the native's innate urge. [The chart of Adolph Zukor, movie pioneer, follows on the next page.] — **As-trological Essays**, 1979

GET TO KNOW YOUR CANDIDATES

Michele Bachmann

with a bit of SARAH PALIN thrown in

I WAS planning to do Sarah Palin this week but had a request for **Michele Bachmann**, who is more trendy anyway.

Michele Bachmann, a Republican, has represented Minnesota's sixth Congressional district since the election of 2006. She is a member of the Tea Party and a founder of the House Tea Party Caucus. She is currently running for president.

The first thing to note about Bachmann's natal chart, April 6, 1956, in Waterloo, IA, is a Mars/Neptune square. Mars/Neptune is just plain icky. It's doing things for reasons that are weird or troubling & shades straight into malicious cruelty. See her chart on **pg. 4**. You will also note Mars opposite Uranus, which is violence, among other things. With a Mars-Neptune-Uranus T-square (with Sun & Mercury, a Grand Cross), and Bachmann's chart not (yet) rectified, we can say, without question, that these planets are not angular. If they were, she would be in prison or under heavy sedation or maybe both.

As it is, she is just your typical 55 year old looney running for president. After Reagan, after Bush junior, after Obama (all grossly unqualified for the job), she is what we expect to see, paraded before us.

Bachmann has a scattered chart, which are among the most difficult to rectify, even for me. A useful clue came on Friday, when she was asked about the unemployment numbers. (On Friday it was announced that in June unemployment in America inched upwards, from 9.1 to 9.2%. No serious person believes these numbers, which understate actual unemployment by more than half, but I digress.)

In response to the question, Michele Bachmann did not say she had empathy for hard-pressed Americans. She said that worsening unemployment was good for her candidacy. In other words, she took the news as "what's in it for me?"

This is our second clue for rectifying her chart, and it brings me to **Sarah Palin**. Sarah was born February 11, 1964, in Sandpoint, ID, time unknown. Palin has the opposite chart to Bachmann: Palin has Moon late in Capricorn, and Mercury, Sun, Mars and Saturn all in Aquarius, a stellium. In rectifying Palin's chart, all of this is going to fall in one house, more or less. The only problem is which.

The clue came with what she did when John McCain made her his running mate in 2008: She stole the show.

For Sarah Palin, running for (vice) President was all about me Me ME !! While on the campaign trail she was discovered to be charging expensive lingerie to McCain's account, among other improbable things. This helped me place her stellium by quadrant.

The first quadrant (houses 1, 2, 3) is all about the self. The second (4, 5, 6) is about creativity, the third (7, 8, 9) is about the partner, and the fourth (10, 11, 12) is about the world as a whole. Remember this is very rough.

Palin is clearly a 1st quad kind of girl, and as far as **Door no. 1, Door no. 2, or Door no. 3**, the "what's in it for me" that Palin powerfully exhibits, gives her Door no. 2: Money. That sets Sarah Palin's time of birth, February 11, 1964, Sandpoint, Idaho, to 3:00 am, PST (approximate). See the result on **pg. 4**.

So last Friday when Michele Bachmann was given a chance to sympathize with America, but instead chose "what's in it for me?" she placed her Sun or Moon in her second house. We compulsively act out our natal house placements, we can do little else. Bachmann herself gave us the key, we only need to work out the details.

Sun: Putting Bachmann's Sun in the second results in a nasty Moon-Jupiter/Pluto opposition across the ascendant/descendant. No. Bachmann has a lot of nasty things in her chart. Her freedom rests on her ability to keep them hidden.

Moon: If I put her Moon in the second, it made her reply visceral, which is to say, instinctive, as that's what the Moon is. It puts her Jupiter/Pluto conjunction in the 8th. Opposite the Moon, this is a "what can I get out of them?" placement, the 8th being other people's money. Both planets in Leo, the ruler is the Sun, which, if this proposed time is right, is in the 3rd. Sun in the 3rd is a Big Wheel around town. Which is a good base for a politician. Bachmann takes what she can get from others (8th house) & plows it into her local standing (3rd). With Mercury exactly conjunct Sun, this is also someone who will do well in school, and so far as writing her own **Wiki page**, will enthusiastically go on & on & on.

(continued, pg. 4)

Get your books from **AstroAmerica!** All the books, fast service, fair prices.

Order on-line at
www.AstroAmerica.com
 Order toll-free: 1-800-475-2272

This is a serialization of Vivian Robson's masterpiece, **A Student's Text-Book of Astrology**. It is now in print.

Part 47:

Finance

THE second house rules money & property; the 5th speculation; the 8th loss but also legacies, inheritance, and the money of the wife, partner, and general public, and the 11th, income from business. Planets in these houses or their lords will indicate gain or loss through these matters.

1. Note the planets in the 2nd, its ruler, and their signs, and also planets aspecting them with their houses and sign positions. Favourable aspects will bring gain by means of the matters, people, and occupations ruled by the aspecting planet and its sign & house, and bad aspects will similarly indicate the source of loss. Any planet in the 2nd will bring gain if well aspected but if it is a malefic and weak by sign the gain may not prove durable. The same method of judgment is to be applied to planets in, or the rulers of, the 5th, for speculation, the 8th, for legacies, and so on.

2. Particular attention should be paid to the Sun, Moon, Jupiter and Venus, as they are natural signifiers of money. The Sun is more important in a woman's map, and the Moon in a man's. If these bodies are afflicted the fortunes are poor, but favourable aspects denote gain. A good aspect between Sun and Moon is very beneficial and if these bodies afflict one another the fortunes are uncertain or fluctuating.

3. Examine the position & aspects of the Part of Fortune in a similar way.

4. Judge wealth or poverty by the greater number of indications and the relative strength of the planets. Cardinal signs and angles give increased fortune or misfortune, while mutable signs & cadent houses tend to obscurity & little success.

— **A Student's Text-Book of Astrology**, by Vivian Robson.

FROM THE FOURTH BOOK OF THE
TETRABIBLOS

on **The Fortune of Wealth**
 by **Claudius Ptolemy**

When the Part of Fortune has been determined, it must be ascertained to what planets the dominion of it belongs; and their power and connection, and also the power and connection of others configured with them, or in elevation above them, whether of the same or of an adverse condition, are then to be observed: for, if the planets which assume dominion of the Part of Fortune be in full force, they will create much wealth, and especially should the luminaries also give them suitable testimony in addition.

In this manner, Saturn will effect the acquirement of wealth by means of buildings, agriculture, or navigation; Jupiter, by holding some government, or office of trust, or by the priesthood; Mars, by the army and military command; Venus by means of friends, by the dowry of wives, or by other gifts proceeding from women; and Mercury by the sciences and by trade.

Should Saturn, however, when thus in influence over the fortunes of wealth, be also configured with Jupiter, he particularly provides wealth through inheritance; especially if the configuration should exist in the superior angles. Jupiter being also in a bicorporeal sign and receiving the application of the Moon; for in such a case, the native will also be adopted by persons unallied to him, and will become heir to their property.

And, further, if other stars, of the same condition as those which rule the Part of Fortune, should likewise exhibit testimonies of dominion, the wealth will be permanent. . . — **Book IV, chapter II, Tetrabiblos**, by Claudius Ptolemy. Translated by J.M. Ashmand.

HEAD TO HEAD

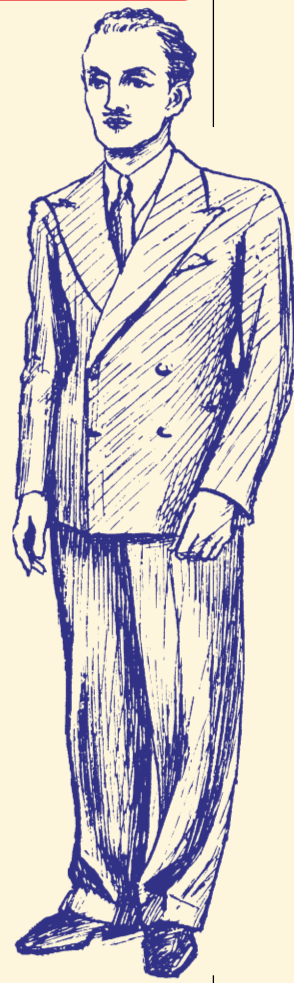
Is This You?

10°-20° Capricorn rising
The Taurus decanate

The Appearance of the Second Decanate:

This combination widens the figure and face and checks the restless expression of the sign, but the eyes often retain the blank lack-lustre appearance so often associated with Capricornians. In this case the voice is Taurian and therefore soft and pleasing. But the figure is more angular and rigid than the pure Taurian type.

The *Taurus* decanate of Capricorn is ruled by Venus. This is a more fortunate combination than the previous one. Influential friends assist the career, which is dominated by a fixed desire to succeed, constrained by a more equitable manner and kindly nature. When afflicted the nature takes on a fixed quality and the disposition becomes despotic. — **Man and the Zodiac**, by David Anrias.



- July 14**
 1223—Louis VIII becomes king of France
 1798—Sedition Act becomes law
 1865—First ascent of the Matterhorn
 1881—Billy the Kid shot
 1911—Plane lands at the White House
 1965—Mariner 4 flies by Mars



This gives Michele Bachmann a Capricorn ascendant.

With Capricorn as an ascendant, the Mid-heaven can be either late Libra or early Scorpio. Rather than try to distinguish between the two signs, we can judge by the rulers of the signs, and the sign and house placements of those rulers.

With Libra on the MC, the ruler is Venus in Gemini in the 5th. Which, as Venus is tightly opposite Saturn, amounts to a teasing, “*rescue me, rescue me*” approach to the public: Venus in the 5th being sex appeal, the opposition to Saturn requiring rescue, the two-faced nature of Gemini being a tease.

The alternative is Scorpio on the MC. Ruler Mars in Capricorn in the ascendant. As Mars is exalted in Capricorn, that’s Mars-Mars, ascendant and MC. That’s a pit bull. And, sorry to say, that’s Michele Bachmann, Tea Party leader.

I said I did not think Bachmann’s Mars-Uranus-Neptune T-square was angular, but now I find that Mars and Uranus are. Mars and Uranus are therefore presumably a long way from the ascendant, which means Michele Bachmann’s ascendant is in the area of 5–6° Capricorn, and the distance from the ASC/DSC, nearly 20° for Mars and more than 20° for Uranus, has kept her mischief out of the public eye. This probably has something to do with decanates and their rulers, the rulers of the triplicities. Someday when I get frustrated with the limits of my chart reading ability, I might take up that study.

This places Bachmann’s Neptune late in the 9th. As I’ve determined there is little if any orb on the backside of an angle, as well as little orb beyond a sign boundary, Neptune retrograde in Libra only weakly affects the MC in Scorpio, if it affects it at all. As the focal point to the T-square, its primary impact will be in the 9th. Which, retrograde, is the direction it’s headed. Bingo. The Mars-Uranus-Neptune T-square is a cheap Jeezus bigot.

Michele Bachmann: April 6, 1964, 1:10 pm, Waterloo, Iowa.

I LIKE the chart. Well, not “like”. Bachmann is not someone who is likeable. Regardless of her time of birth, she is a polarizing figure, as that’s what oppositions will do:

- Sun/Mercury opposed Neptune (wide).
- Moon opposed Jupiter/Pluto.
- Venus opposed Saturn (tight).
- Mars opposed Uranus.

Each planet in her chart is opposed to some other planet. She has done one better than me. I have Mars unopposed. But she

is, critically, mercifully, missing the chief opposition, that of Sun and Moon. Michele Bachmann’s Sun and Moon are in sextile. When Sun and Moon are in harmony, you like who you are. Despite anything else.

So let’s have a look at this strange woman and her chart:

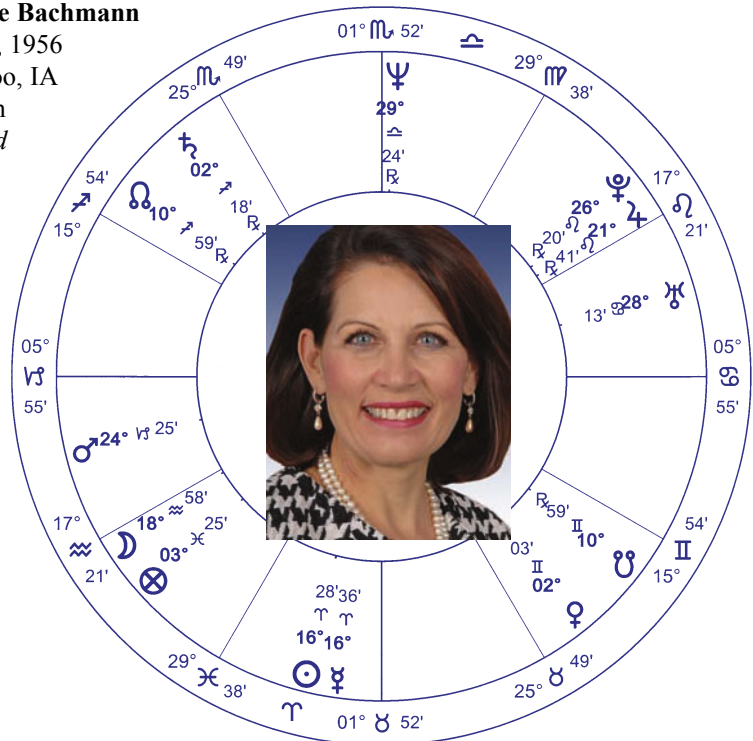
Five or six degrees Capricorn rising. It’s said that Capricorn rising will make one dark and small, by comparison to the average. Bachmann is said to stand 5 feet 2 inches,

which is 157-ish cm. Which is short. And she looks “dark” to me.

Ascendant ruler Saturn in the 11th in Sagittarius, retrograde, produces beliefs and ideals (11th house) which are traditional and conformist (Saturn) and which repudiate the new and the different (Saturn retrograde repudiating Sagittarian qualities). Since Sagittarius has an affinity with the 9th house, and as in the 9th house we find the fog of Neptune, Bachmann uses her Saturn in order to

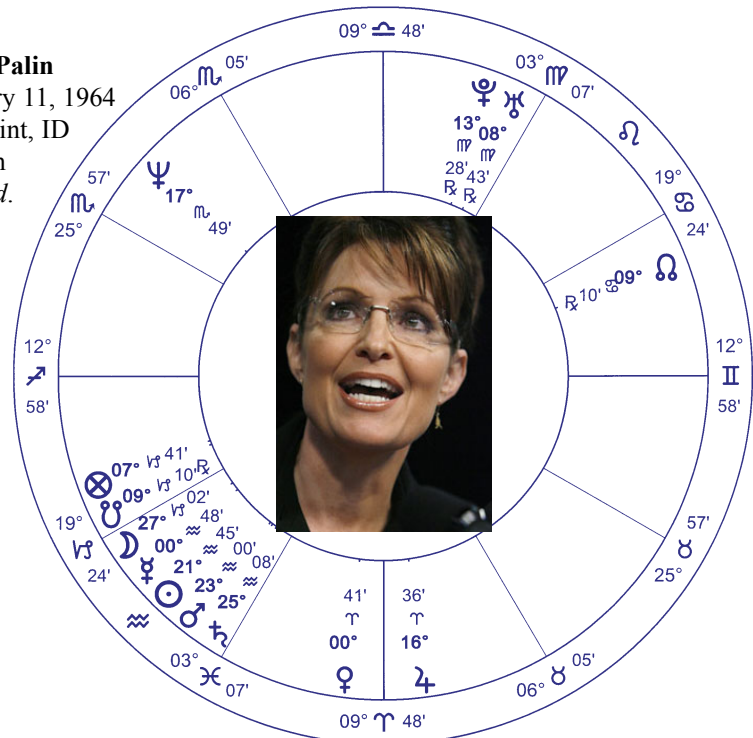
Michele Bachmann

April 6, 1956
Waterloo, IA
1:10 am
rectified



Sarah Palin

February 11, 1964
Sandpoint, ID
3:00 am
rectified



make sense of her 9th house. In other words, she believes what her Saturn tells her to be true. She is a religious nut. This, by the way, is true for all of us. We always believe what Saturn tells us. Why?

Saturn in the 11th means Bachmann has no friends, or doesn't like the ones she does have. Tightly opposed to Venus, the planet of love, no one loves Michele, as this is the meaning of a Venus-Saturn opposition. To "prove the world wrong", Bachmann compensated with children.

Which shows willpower on her part, as Bachmann's chart does not appear to be fertile: Sun in Aries, not fertile, Moon in Aquarius, not fertile, Venus in Gemini, not fertile, Mars in Capricorn, not fertile. But this is how I learn astrology: Taurus on the cusp of the 5th is very fertile, and would indicate beautiful girls. In this case, a fertile sign on the 5th cusp, and the ruler of the 5th in the 5th, are decisive. Bachmann has two boys and three girls. In Michele Bachmann's chart we learn the sign on the cusp of the 5th, if it gets any support at all, can overwhelm other factors. House cusps are important. Rectifications that are based only on progressed/directed aspects to the ascendant are unreliable.

In addition to her own children, Bachmann also had 23 foster children, which, it turns out, were all young girls with eating disorders. Bachmann and her husband ran a live-in treatment house. Venus, a female planet in the 5th would indicate girls rather than boys. With Gemini on the cusp of the 6th, Venus in Gemini smears its way into the 6th (the 6th being food), where, Gemini being the mouth, indicates food as an oral fixation. Venus makes for sweets.

What the children thought of Michele I don't know. Venus powerfully opposed by Saturn, they might have seen her as a Let Me Love You Or Else sort of person.

Mercury at 16° Aries, is in Cazimi (in the heart of the Sun), which is rare. Traditionally this is said to greatly strengthen Mercury, but modern writers disagree and, having looked at Bachmann's work, I agree with modern authors. Fanatics are invariably bluster. They are rarely very bright.

Along with her Mercury, Bachmann's Sun is in the third house. The Sun "lights up" the house it is in, using its sign as its fuel. Aries gives the Sun a great deal of energy. When the Sun appears in the 3rd, this is someone who is busy with brothers, sisters, education, errands & short journeys, in sum, daily life. As I mentioned, it's the I'm a Big Shot position.

The Moon, by definition, fluctuates. It changes in size, it comes & goes. A fixed sign, such as Aquarius, gives it a measure of stability. Second house Moons are defensive. They eternally fear their "things" will be taken away. Presuming I have Bachmann's time approximately right, this fear is not misplaced. Jupiter/Pluto opposite in the 8th will conspire to take her things away, unless she can trick them into giving her what she does not deserve. This is always the case with oppositions. One side fights the other, steals from the other, lies to the other, makes war on the other. The personal planet is always "me", the outer planet is always "them". The struggle is ceaseless. It is Bachmann's entire life.

GIVE this woman power, let her find her head, and she will act out her many oppositions, as that is all she is, or ever will be. She will find enemies and attack them. As president she will have at her command the full power of the United States. Remember always, that *for the period of time the leader is in office, their chart is our chart*. For better or worse. Scared yet?

Does she believe her infantile ideas about Jesus and the economy and all the rest? I doubt she knows herself. All she knows is that she has fought, has always had to fight, and always will have to fight. Oppositions are confrontational, oppositions are polarizing, the Mars-Neptune-Uranus T-square is cruel and violent. Which the Sun feeds. Until her dying day.

So Michele Bachmann is crazy and looney and everyone knows it and so she hasn't a chance next year, right? Right? Right?

I am not a political pundit. Election after election I have watched my fellow astrologers embarrass themselves with their predictions. Presuming she has an early degree of Capricorn rising, Bachmann has recently had transiting Pluto conjunct her ascendant, but reading her Wiki page I am unable to determine when that was.

For Michele Bachmann the next hurdle comes in September when Saturn opposes her Sun/Mercury. It will be a tricky time. Mars will be conjunct her Uranus—and oppose itself, Uranus will trine her Saturn. Neptune will trine itself. While the Mars to Uranus conjunction may look ominous, remember that Mars is a frequent flier and comes around every couple of years or so. Without more firepower to focus his efforts, Bachmann will swat Mars down. Saturn opposite her Sun/Mercury, that's another thing.

Presuming some powerful Saturnine

force does not derail her hopes this coming September, how does Michele's chart look on election day?

In a simple sense, surprisingly good. Saturn by that time will be firmly established in her 10th house. Transiting Saturn in the 10th brings rewards for hard work, and whatever you may think about the woman, she's been out pounding the pavement for a long time. Saturn in Scorpio in the 10th will be in mutual reception with natal Mars in Capricorn in the first. Normally the two hate each other, but when Mars is in Saturn's negative sign (Capricorn), they get on well-enough that, if given a chance, Bachmann might just supercharge them to force a victory. There is, if I am not mistaken, a great deal of willpower in this woman.

As Bachmann is a Representative and must run every two years, the alternative is that she merely runs again for the same seat. Saturn's position in the 10th would make that a setback. Or perhaps lower her sights and settle for a Senate run. That would be freshman Democratic Senator **Amy Klobuchar's** seat, which comes due next year. Which way will Michele Bachmann go? I suspect it will depend on what happens this coming September.

If elected, will she be a horrible president? Yes, absolutely, positively, without any question or doubt. From this far out, do I see a better candidate? No, regrettably, I do not. They all look horribly bad to me. Over the past 20 years, America has become ungovernable. Freaks, con men and loonies are all we have. Yes, it can get worse. Politicians used to pretend they were motivated to serve their fellow men. Aren't you glad that now they're honest and admit they're only in it for themselves? I sure am!

I USED to scoff at the absurd End of the Mayan Calendar stuff, and while the End Of The World And Planet Earth Too will always be absurd, increasingly I think turmoil next year is likely. Very likely. Be afraid. Be very afraid.